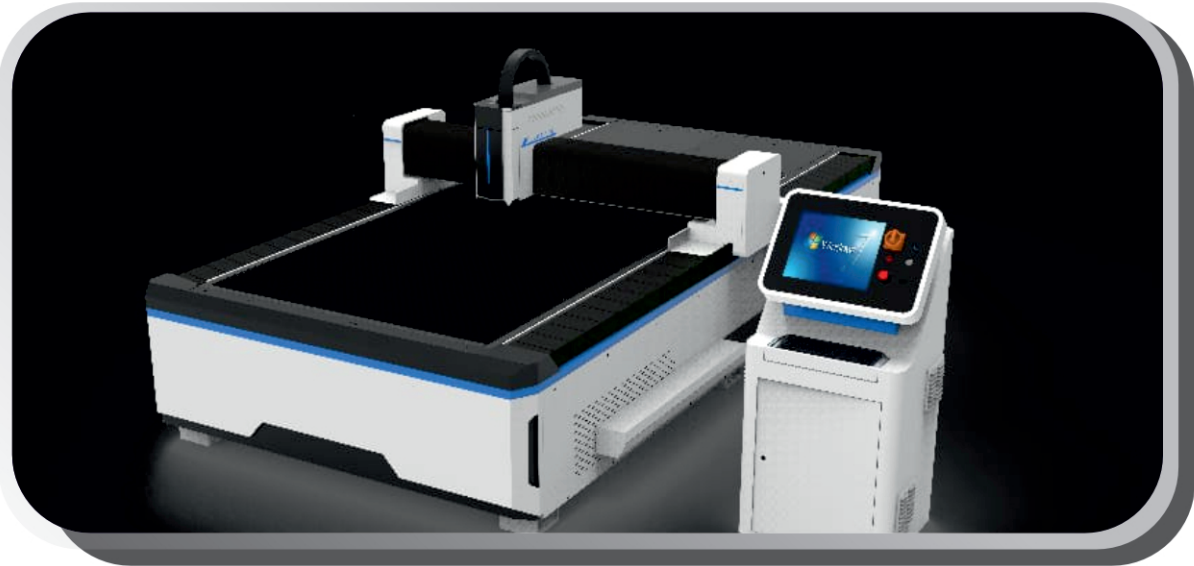


The background features a complex, abstract design of overlapping blue geometric shapes, including triangles and polygons, in various shades of blue. A white line cuts across the shapes from the top left towards the center. Several blue triangles are scattered throughout the composition, some appearing to be part of the larger shapes and others as separate elements.

PRODUCT CATALOGUEA

OUR RANGE OF PRODUCTS



CNC ROUTER



Co2 LASER CUTTING



LASER WELDING



JEWELLERY WELDING



Co2 MARKER



FIBER MARKING



Application Industry

Advertising Signs And Logos, Crafts And Gifts, Crystal Ornaments, Paper Cutting Techniques, Relief, The Printing Plate, Leather, Clothing, Embroidery, Decoration, Frame Productions. Appliances, Etc.

Applicable Materials

Non-metal Materials Like Cloth, Woolens, Leather, Paper, ABS Double Colour Sheet, Acrylic Sheet, Wood, Bamboo, Plastic, Rubber, Tile, Crystal Etc....

Faster Than Others

The New Plus Series Designed Maximum Effective Working Style, With The Speed Step Motors, Inner Guide, Japanese Bearings And Maximum Speed Design It Will Up To 1 Meters/second Engraving Speed, 6200mm/second Cutting Speed. The BEST CHOICE In Market.



Multi Function Table Design

Depends On Your Material You Have To Use Different Working Tables, The New PLUS Series Has Honeycomb Table, Knife Table As Standard Configuration. It Has Vacuuming Under Honeycomb Table. With The Pass-through Design Easy Access To Use Big Size Material, If You Want Up/down Table. We Can Also Provide.



Strong , Stable And Modern Body

The New Plus Series Was Designed By Manufacture From China. It Was Build On 10 Years experience, Customer Feedbacks, Machine Body's Thickness Is From 105mm To 5mm. Total Machine Is 1.5 Items Than Other Machine In Market. Machine With High Stability. Led Lights From Left And Right Side Looking Machine Inside View Very Bright.





Co2 LASER ENGRAVING & CUTTING MACHINE



Product Features

1. Our Laser Machine Adopts 64 Sp Digital Controlling Technology. It Offers Function Of Successive, Rapid And Cutting, Optimization Of Shortest Processing Path To Create High Efficiency And Stability.

2. The Newest Software Is Matched To AutoCAD, CoreDraw And Other Graphic Processing Software For Outputting Original Graphic. It Defines Engraving Sequence Freely To Realize One Item Or Whole Output.

3. Professional Accessories Are Provided For Various Processing, Honeycomb Table Is Suitable For Textile, Aluminum Blade Table Is Usually Used In Advertising Industrial, Rotary Is Engrave Or Cut Cylinder Such As Pencil Vase.

Product Features

Model	6040	6090	1390	1490	1610
Size	600x400mm	600x900mm	1300x900mm	1400x900mm	1600x1000mm
Working Table	Aluminum Blade Or Honeycomb				
Laser Type	Co2 Long Lifetime Catalysit Sealed Co2 Laser Tube				
Laser Power	60w/80w/100w/130w/150w/180w				
Rapid Speed	600mm/s				
Resetting Positioning Accuracy	0.05mm				
Graphic Format	Cdr, Bmp, Jpg, Dst, Plt, Dxf, Dwg, Tif, Psd, Ai				
Supported Software	Coreldraw, Photoshop, Illustrator, Autocad Etc.				
The Smallest Cutting Characters	Chinese 2.0mmx2.0mm,english 1.0* 1.0mm				
Power Supply	Ac220v/ac110v+ 10%, 50-60hz				
Operating Temperature	0-45°C				
Operating Humidity	5-95% (Free Of Condensed Water)				



Co2 1390



Product Features

The 1390 Co2 laser machine takes our highest-quality engraving technology and incorporates it into smaller-format systems which allow customers to get the latest technology in a transportable format. The 1390 Co2 laser machine feature a touch-screen display panel, on-screen artwork positioning with our WI-FI system, and job trace functionality for quick and easy artwork setup.

- 1390 extra large working area.
- High speed, Precise and Rapid movement.
- 100% Quality at maximum speed

Technical Parameters

Product Model	1390 Co2 Laser cutting & Engraving Machine
Volume & Gross Weight	1300X900 mm
Working Table	Aluminum blade or honeycomb
Laser type	CO2 Long lifetime catalyst sealed co2 laser tube
Laser power	60W/80W/100W/130W/150W/180W
Cutting speed	0-600mm/s
Engraving speed	0-1000mm/s
Resetting positioning accuracy	0.01mm
Graphic format	CDR, BMP, JPG, DST, PLT, DXF, DWG, TIFF, PSD, AI
Supported software	CorelDraw, Photoshop, Illustrator, AutoCAD etc.
Power	AC220V/AC110V±10%, 50-60HZ
Operating temperature	0-45 °C
Operating humidity	5-95% free of condensed water)acy



Co2 LASER 1325

Product Features

1. Open type working table achieves large format engraving and cutting area.
2. Dust helmet keeps linear guide rail clean and smooth, which extends machine lifespan.
3. Guide rail groove is one-piece type and made by milling machine. Light patch won't be changed after long time using, which makes the whole machine more stable and cutting more precise
4. Whole machine with stable mechanical design, ensure high stability, high speed and high precision.
5. Honeycomb table with thicker ZnFe alloy, more durable&smooth. Laser path system use Mo mirrors&imported lens, which keeps the same power output at any site on working table.



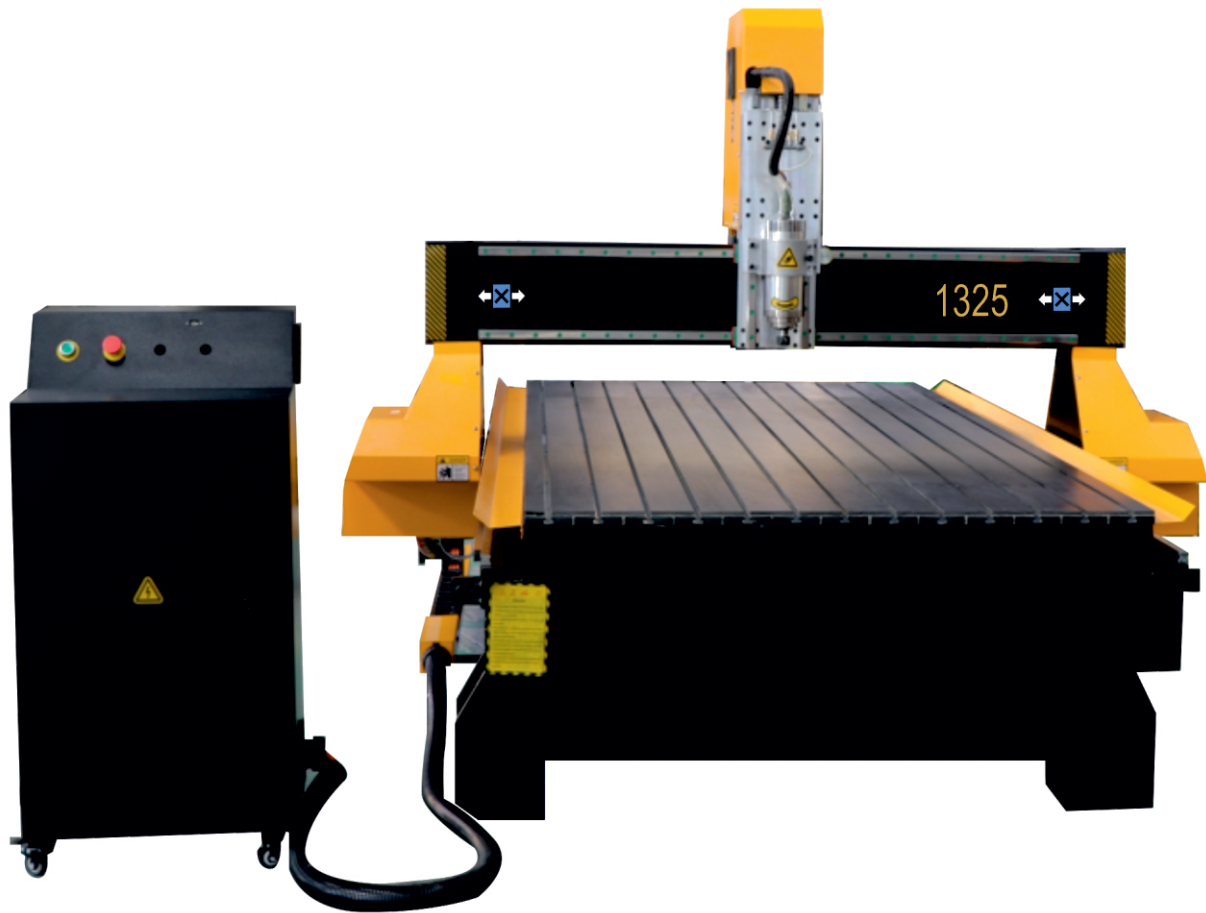
Applicable Materials

Non-metal materials like cloth, woolens, leather, paper, ABS double color sheet, acrylic sheet, wood, bamboo, plastic, rubber, Mdf Raccine etc.....

Product Model	1325 (1300*2500mm)
Working Table	Triangular Blade
Laser type	CO2 Long lifetime catalyst sealed co2 laser tube
Laser power	200W/400W/600W
Cutting area	1300*2500mm
Cutting speed	0-600 mm/s
Motion system	Offline motion system with high precision linear guide rail and stepper motor
Resetting positioning accuracy	0.05mm
Graphic format	CDR, BMP, JPG, DST, PLT, DXF, DWG, TIFF, PSD, AI
Supported software	CorelDraw, Photoshop, Illustrator, AutoCAD etc.
The smallest cutting characters	Chinese 2.0mmx2.0mm, English 1.0*1.0mm
Power supply	AC220V/AC110V±10%, 50-60HZ
Operating temperature	0-45 °C
Operating humidity	5-95%(free of condensed water)



CNC 1325 Wood Router



Product Features

1. Entire steel frame structure, high temperature to make the frame regain the same steel feature of high strength, ensure the bed undeforable.
2. Gantry movement style structure, scientific and reasonable table design. Optional automatic oil lubrication system, free maintenance.
3. The X-axis and Y-axis are transmitted by the imported gear and rack with high precision. Running more stable and quiet with high speed and great power.
4. The Z-axis is driven by the ball bearing screw rod with original screw nut of European brand. Its travel is up to 200mm.
5. The large-scale straight-liner square guiding t rack is imported from Taiwan with high steel feature.

Technical Parameters:

MODEL	CNC 1325 WOOD ROUTER
Working Area	1300*2500*200
Running Speed	Upto 50m/min (Depend upon material thickness)
Spindle Moter	3KW / 4.5KW /6KW / 7.5KW / 9KW , Spindle
Spindle Speed	0-18000 RPM / 0-24000 RPM / 0-36000
Operating System	NK 105 & Rich Auto Controller System
Drive System	Lead Shine Drive With Stepper Motor
Z MAXFeed - in	120mm (Customizable)
Holding	T-Slot
Optional Device	Dust collector (Single or Double Bag)
Command Code	Goode (*uoo, *nc, *mmg, *plt)
Applied Material	Acrylic, MDF, Hard Wood, PVC
Oil supply system	Automatic Oil supply systeme



CNC 1325 Stone Router



Product Features

1. Entire steel frame structure, high temperature to make the frame regain the same steel feature of high strength, ensure the bed undeforable.
2. Gantry movement style structure, scientific and reasonable table design. Optional automatic oil lubrication system, free maintenance.
3. The X-axis and Y-axis are transmitted by the imported gear and rack with high precision. Running more stable and quiet with high speed and great power.
4. The Z-axis is driven by the ball bearing screw rod with original screw nut of European brand. Its travel is up to 200mm.
5. The large-scale straight-liner square guiding t rack is imported from Taiwan with high steel feature.

Technical Parameters:

MODEL	CNC 1325 WOOD ROUTER
Working Area	1300*2500*200
Running Speed	Upto 50m/min (Depend upon material thickness)
Spindle Moter	3KW / 4.5KW /6KW / 7.5KW / 9KW , Spindle
Spindle Speed	0-18000 RPM / 0-24000 RPM / 0-36000
Operating System	NK 105 & Rich Auto Controller System
Drive System	Lead Shine Drive With Stepper Motor
Z MAXFeed - in	120mm (Customizable)
Holding	T-Slot
Optional Device	Dust collector (Single or Double Bag)
Command Code	Goode (*uoo, *nc, *mmg, *plt)
Applied Material	Acrylic, MDF, Hard Wood, PVC, nylon, Aluminium, Brass, Korean, Granite, Stone
Oil supply system	Automatic Oil supply system



Fiber Laser Marker Machine



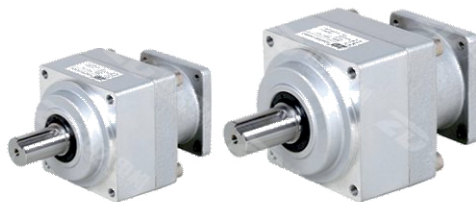
Product Features

1. Our Fiber Laser Marking Machine use Raycus or IPG laser source, sealed laser structure, output optical fiber, optical isolation, free maintenance.
2. Digital scanner can mark as high speed. Powerful control system can optimize different processes according to the various data. Multi-language is available. It supports up to 256 color layer management functions, meet multiple application.
3. Fast speed, small size, low power consumption, out-of-the-box, easy to operate.



Product Features

Iron, stainless steel, aluminum alloy, zinc alloy, copper, nickel, plastic (PVC/PC/PU), ABS material, epoxy resin etc.



Product Features

Wavelength	1064um	Machine Dimension	900*800*1500mm
Spot Size	< 20 micron	Machine Weight	150kg
Laser Power	10/20/30/50/60W	Work Environment	No Dust, Ac, Online UPS 3KWA
Pulse frequency	20-80KHZ	Temperature	10-35°C
Cooling	Air cooling	Humidity	<85% (no condensation)<
Marking area	110*110mm/1 75*175mm/20 0*200mm, 300*300	Machine Power	800W
Work Speed	0-7000mm/s	Marking Angle	0°45°90°angle
Graphic Format Supported	BMP, JPG,AI,EXF, PLT, ETC, DXF	Rotation Precision	0.05mm
Supply Voltage	AC220v+10V	Rotary Optional	
Frequency	50HZ-60HZ	Indication Light	Red Light
		Rotary Clamp	Optional



CO2 MARKER

Co2 Laser Marker Machine

Product Features

1. Co2 LASER marking machine enables optimal marking conditions for a variety of materials. With a wavelength of 10.6um, high precision marking is easily achieved.
2. The Galva-steered beam designed for marking enables the machine to mark at speed as high as 20,000 mm/sec.
3. CO2 laser systems can be used to mark 2d barcodes, 2d data matrix, logos, or any sequence of characters and numbers on your parts and products. Marking data can be input manually, bar code scanned, or downloaded from your mainframe computer or network system.

Applicable Materials

Electronics Component, Craftwork Gift, Leather, Shell Nameplate, Fabric Cutting, Foodstuff, Medicine Package Printing & Plate Making, Jeans Whiskering, Damaging And Writing.

Technical Parameters:

Model	LT60/ LT80/ LT100/ LT130/ LT150
Laser Source	CO2, Sealed-off
Maximum Output Power	0/80/100/130/150
Working Area	70mm 70mm - 600mm*600mm
Laser Wavelength	10.64um
Repeatability	± 0.01 mm
Cooling Systems	Air-Cooled / Water-Cooled
Maximum Linear Marking Speed	- 7,000 mm/sec
Power Consumption	1.2KW/2.6KW/3.8KW/4.4KW
Power Supply	AC Auto-Switching 220V/50-60Hz
Application	Electronic Component, Craftwork Gift, Leather, Shell Nameplate, Rubber Products, Garments Accessories, Fabric Cutting, Foodstuff, Medicine Package Printing & Plate Making, Jeans Whiskering, Damaging and Writing.



Product Features

1. It's Widely Used In Many Non-metal Materials, Such As: Leather, Fabric, Paper, Pvc, Rubber, Wood, Ceramics, Glass, Plastics (acrylic Resin, synthetic Fiber, Pe, Pt, Pvc) And So On.
2. It's Applied In Many Industries, Such As: Shoes, Garment, Clothing Accessories, Pharmaceuticals, Packaging, Toys, Food, Beverage, Medicine, Daily-use Cosmetics And Other Industries.

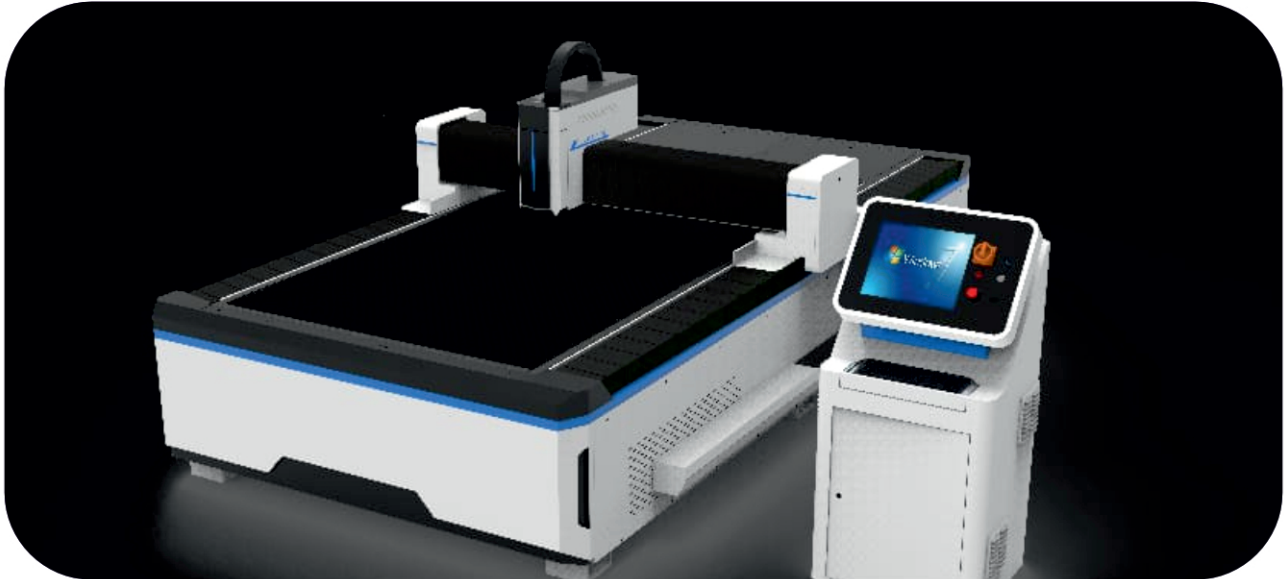
Technical Parameters:

Product Model	Co2 Marker
Laser Power	180W/250W/350W/450W/500W
Repeat Frequency	1-130khz
Laser wavelength	10640nm
Marking area	450mm *450mm, 550mm*550mm, 650mm*650mm
Marking method	XYZ
Min line width	0.2mm
Marking speed	<10000mm/S
cooling method	Constant temperature cooling group
Environmental requirements	Constant temperature 15° C; humidity 30-80% No condensation
Dimensions	1747mm* 1266mm* 1780mm
Optional	Motorized lift, auto focus, CCD, etc.





Open Body Fiber Laser Cutting Machine



Product Features

- Steel plate bed has undergone finite element analysis and annealing treatment, better with anti-deformation and anti-vibration, suitable for cutting thick material with high power
- Full cover enclosed design for safe and clean production
- Two tables working increases production efficiency
- Equipped with video monitoring function to realize intelligent visual production

Technical Parameters:

MODEL	Laser Technik 2040
Working Area (L*W)	1500*3000mm
Laser Source Power	1 KW, 1.5KW, 2 KW 3KW, 4KW
X/Y Axis Position Accuracy	+0.03mm/1000mm
X/Y Axis Repeat Position Accuracy	±0.02mm
Max Moving Speed	120 m/min
Max Acceleration	1 g
Max Loading Weight	with cover & pallette 4600 kg.
Power Supply	AC380V/50HZ



**Laxmpur Durga mandir ke pas
Melrose Aligarh - 202001**

**Cont :- 9773503054, 8266967375
Email :- aakash199975@gmail.com**